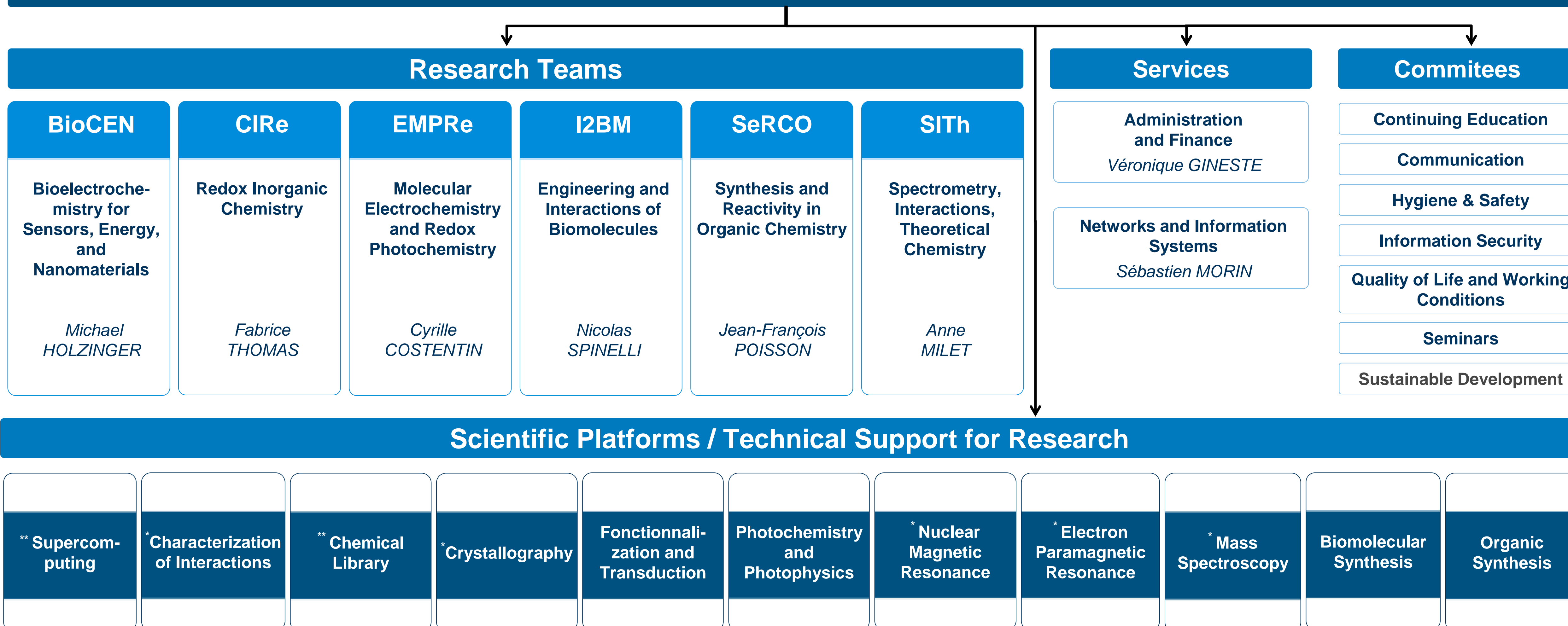


# Département de Chimie Moléculaire UMR 5250

*Director : Didier BOTURYN*

*Deputy Director: Fabrice THOMAS*

*Administrative and Financial Officer : Véronique GINESTE*



# Research Teams and Independent Researchers

## Team BioCEN

Bioelectrochemistry for  
Sensors, Energy, and  
Nanomaterials

*Michael HOLZINGER, DR1*

COSNIER Serge, DR *Emeritus*  
GIROUD Fabien, MCF  
GONDRAN Chantal, PR2  
GORGY Karine, MCF  
GROSS Andrew, CR CN  
LE GOFF Alan, DR2  
LE PELLEC Arielle, IGE CN  
NEDELLEC Yannig, IR  
ROZAND Régine, Tech CN

## Team CIRe

Redox Inorganic  
Chemistry

*Fabrice THOMAS, PR CE*

ALTOUNIAN Nicolas, Tech CS  
BELLE Catherine, DR *Emeritus*  
BLUTEAU Caroline, ADJENES  
P2  
CAMERINO Nathalie, Tech CE  
CHAUVIN Jérôme, PR2  
DUBOC Carole, DR CE  
D'HARDEMARE Amaury, MCF  
HC  
GENNARI Marcello, CR CN  
GROS Philippe, DR1  
HOFMANN Anne-Aurore, Tech  
CN  
JARJAYES Olivier, MCF HC  
JOUVENOT Damien, MCF  
LALAOUI Noémie, CR CN  
LANOË Pierre-Henri, CR CN  
LECONTE Nicolas, MCF HC  
LOISEAU Frédérique, PR1  
MARTIN David, DR2  
MOLLOY Jennifer, CR CN  
MOLTON Florian, IE HC  
PHILOUZE Christian, IR HC  
ROYAL Guy, PR CE  
THIBON-POURRET Aurore,  
MCF  
TOMAS GONZALEZ DE  
MENDIVIL Eder, CR CN

## Team EMPRe

Molecular  
Electrochemistry and  
Redox Photochemistry

*Cyrille COSTENTIN, PR CE*

BLUTEAU Caroline, ADJENES  
P2  
CAMERINO Nathalie, Tech CE  
CHARDON Sylvie, DR2  
COLLOMB Marie-Noëlle, DR1  
DURIN Gabriel, CR CN  
FORTAGE Jérôme, CR CN  
MOLTON Florian, IE HC  
SIRACH Selim, ASI

## Team I2BM

Engineering and  
Interactions of  
Biomolecules

*Nicolas SPINELLI, PR2*

BERTHET Nathalie, PR2  
BONNET Hugues, IE CN  
BOTURYN Didier, DR1  
BUZZETTI Paulo Henrique,  
MCF  
CALIN Miguel, *Tech CE*  
*décharge 100%*  
CHIERICI Sabine, MCF HC  
DEFRANCQ Éric, PR CE  
DEGARDIN Mélissa, MCF  
DUBATCHEVA Galina, CR CN  
GOYARD David, CR CN  
JOURDAN Muriel, MCF HC  
LAURENT Quentin, CR CN  
LARTIA Rémy, IGR  
LAVERGNE Thomas, CR CN  
LE GOFF Claire, Tech CN  
RENAUDET Olivier, PR CE  
ROZAND Régine, Tech CN  
VAN DER HEYDEN Angéline,  
MCF HC

## Team SeRCO

Synthesis and  
Reactivity in Organic  
Chemistry

*Jean-François POISSON, PR  
CE*

BERTHIOL Florian, CR CN  
BLANDIN Véronique, MCF HC  
CAMERINO Nathalie, Tech CE  
CARRET Sébastien, PR2  
CURTIL Mathieu, IGE CN, CDI  
DARSES Benjamin, CR CN  
FAYOLLE Martine, Tech CE  
GREENE Andrew, DR *Emeritus*  
KANAZAWA Alice, MCF HC  
MINASSIAN Frédéric, MCF HC  
PY Sandrine, DR2  
QUINTARD Adrien, DR2  
VALLÉE Yannick, PR *Emeritus*

## Team SITH

Spectrometry,  
Interactions,  
Theoretical Chemistry

*Anne MILET, PR CE*

CAMERINO Nathalie, Tech CE  
CASIDA Mark, PR1  
DAVID Rolf, Junior  
Professorship  
FORT Laure, IGE HC  
GATINEAU David, CR CN  
GIMBERT Yves, DR1  
JAMET Hélène, PR2  
SATRIN Cécilia, IE CN

## Independent Researchers

PÉREZ DEL VALLE Carlos,  
MCF  
*Modélisation, Dynamique, et  
Phases Condensées*

SIEFFERT Nicolas, MCF  
*Réactivité chimique en solution:  
influence de la dynamique et de  
l'environnement du solvant*

# Département de Chimie Moléculaire UMR 5250

## SERVICES

### ADMINISTRATION and FINANCE

*Véronique GINESTE, ASI*

BLUTEAU Caroline, ADJENES P2  
CAMERINO Nathalie, Tech CE  
ROZAND Régine, Tech CN

### REFERENTS

#### CNRS European Unit

GENNARI Marcello, CR CN

#### Equality, parity, non-discrimination

DUBOC Carole, DR CE

BUZZETTI Paulo Henrique, MCF

#### DATA Management

PY Sandrine, DR2

#### HAL, Open Science

DUBACHEVA Galina, CR CN

#### Software

SATRIN Cécilia, IE CN

David Rei, IGE CN

#### Valorisation / Maturation

GROSS Andrew, CR CN

### NETWORK and INFORMATION SYSTEMS

*Sébastien MORIN, IE HC*

\* THOMAS Fabrice, PR CE

#### CSSI

BOUCHAFA Hafid, AI

MORIN Sébastien, IE HC

**Park management,  
administration. Network and  
server administration**

BOUCHAFA Hafid, AI

MORIN Sébastien, IE HC

**Design and Development**

REI David, IGE CN

### COMMUNICATION

\*\* *Jennifer MOLLOY, CR CN*

\*\* CAMERINO Nathalie, Tech CE  
COSTENTIN Cyrille, PR CE  
DUBACHEVA Galina CR CN  
HOLZINGER Michael, DR1  
JAMET Hélène, PR2  
JOUVENOT Damien, MCF  
PY Sandrine, DR2  
QUINTARD Adrien, DR2  
TOMAS GONZALEZ de MENDIVIL  
Eder, CR CN

### SUSTAINABLE DEVELOPMENT

*Adrien QUINTARD, DR2*

DURIN Gabriel, CR CN  
JOURDAN Muriel, MCF HC  
LANOE Pierre-Henri, CR CN

### CONTINUING EDUCATION

CAMERINO Nathalie, Tech CE

## COMMITTEES

### HYGIENE & SAFETY

*Selim SIRACH, ASI*

#### AP

CURTIL Mathieu, IGE CN CDI  
GOYARD David, CR CN  
HOLZINGER Michael, DR1  
LALAOUI Noémie, CR CN  
LECONTE Nicolas, MCF HC  
SIRACH Selim, ASI

#### SSIAP

BONNET Hugues, IE CN

#### PCR

BONNET Hugues, IE CN  
PHILOUZE Christian, IR HC

### QUALITY of LIFE and WORKING CONDITIONS

*Chantal GONDRAN, PR2*

BERTHET Nathalie, PR2  
BOUCHAFA Hafid, AI  
LANOE Pierre-Henri, CR CN  
MOLTON Florian, IE HC  
ROZAND Régine, Tech CN

### SEMINAR

*Sandrine PY, DR2*

CAMERINO Nathalie, Tech CE  
CHARDON Sylvie, DR2  
GATINEAU David, CR CN  
GORGY Karine, MCF  
LAURENT Quentin, CR CN  
QUINTARD Adrien, DR2  
TOMAS GONZALEZ de MENDIVIL  
Eder, CR CN

### INFORMATION SECURITY

*BOUCHAFA Hafid, AI, CSSI*

MORIN Sébastien, IE HC, **CSSI**  
GINESTE Véronique, ASI

# Département de Chimie Moléculaire UMR 5250

## DCM Scientific Platforms

### Functionalization and Transduction

*Yannig NEDELLEC, IR*

\* HOLZINGER Michael, DR1  
LE PELLEC Arielle, IGE CN

### Photochemistry and Photophysics

\* LOISEAU Frédérique, PR1

### Biomolecular Synthesis

\* LARTIA Rémy, IGR  
LE GOFF Claire, Tech CN

### Organic Synthesis

*Mathieu CURTIL, IGE CN, CDI*

FAYOLLE Martine, Tech CE

\* **Scientific Coordinators**

## Scientific Platforms and Services from ICMG UAR CNRS 2607

### Characterization of Interactions

*Hugues BONNET, IE CN*

\* VAN DER HEYDEN Angeline,  
MCF HC

### Crystallography

*Christian PHILOUZE, IR HC*

\* LANOE Pierre-Henri, CR CN  
ALTOUNIAN Nicolas, Tech CS

### Mass Spectroscopy

*Laure FORT, IGE HC*

\* GIMBERT Yves, DR1  
GUÉRET Rodolphe, ASI

### Nuclear Magnetic Resonance

*Non-staff DCM*

\* MOLLOY Jennifer, CR CN  
ALTOUNIAN Nicolas, Tech CS  
SANAHUGES Romain, ASI, CDI

### Electron Paramagnetic Resonance

*Florian MOLTON, IE HC*

\* DUBOC Carole, DR CE

### Supercomputing

*To be recruit*

\* MILET Anne, PR CE

### Chemical Library

\* Non-Staff DCM