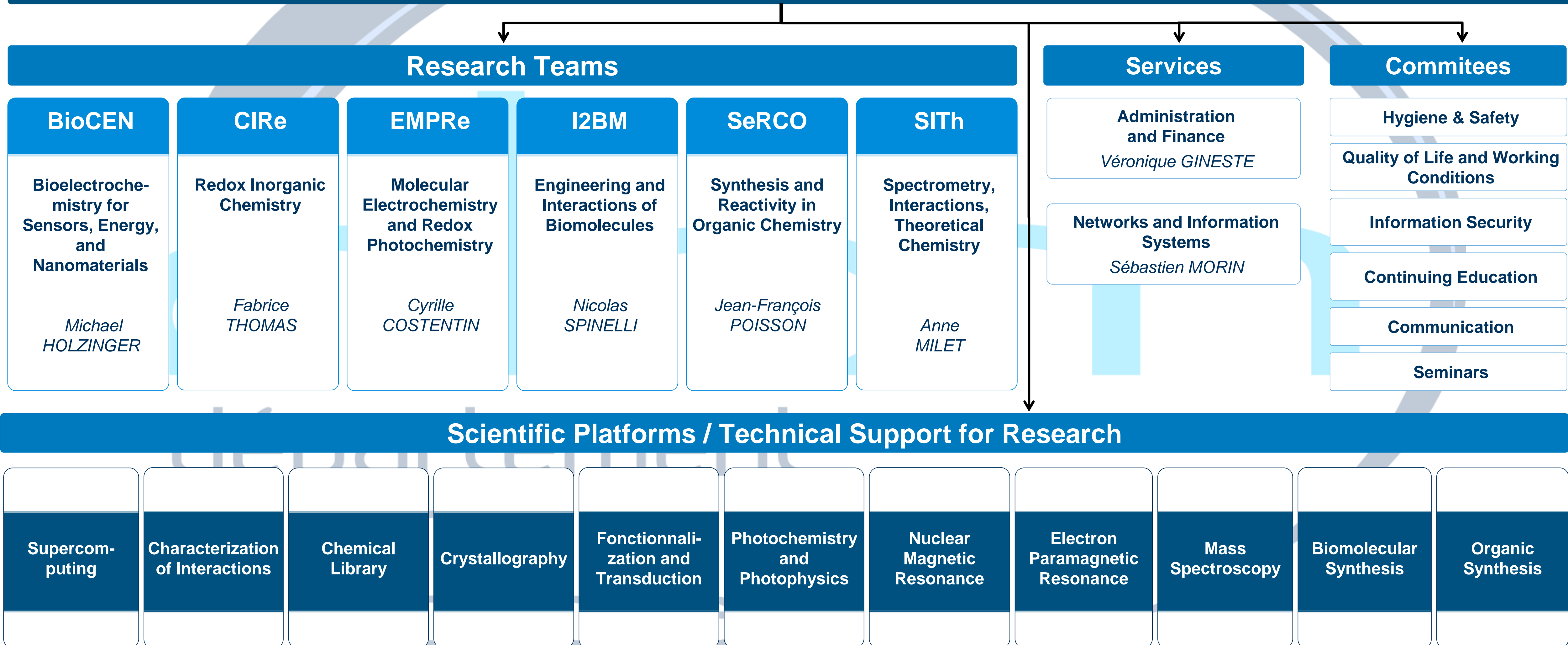


Département de Chimie Moléculaire UMR 5250

Director : Didier BOTURYN

Deputy Director: Fabrice THOMAS

Administrative and Financial Officer : Véronique GINESTE



Research Teams and Independent Researchers

Team BioCEN

Bioelectrochemistry
for Sensors, Energy,
and Nanomaterials

Michael HOLZINGER, DR2

COSNIER Serge, DR CE,
Emeritus
GIROUD Fabien, MCF
GONDRAN Chantal, PR2
GORGY Karine, MCF
GROSS Andrew, CR CN
LE GOFF Alan, DR2
LE PELLEC Arielle, IGE CN
NEDELLEC Yannig, IR
ROZAND Régine, Tech CN

Team CIRe

Redox Inorganic
Chemistry

Fabrice THOMAS, PR1

BELLE Catherine, DR2
BLUTEAU Caroline, ADJENES
P2
CAMERINO Nathalie, Tech CE
CHAUVIN Jérôme, PR2
DUBOC Carole, DR CE
D'HARDEMARE Amaury, MCF
HC
GENNARI Marcello, CR CN
HOFMANN Anne-Aurore, Tech
CN
JARJAYES Olivier, MCF HC
JOUVENOT Damien, MCF
LALAOUI Noémie, CR CN
LANOË Pierre-Henri, CR CN
LECONTE Nicolas, MCF HC
LOISEAU Frédérique, PR1
MARTIN David, DR2
MOLLOY Jennifer, CR CN
MOLTON Florian, IE HC
ROYAL Guy, PR CE
SIRACH Sélim, ASI
THIBON-POURRET Aurore,
MCF
TOMAS GONZALEZ DE
MENDIVIL Eder, CR CN

Team EMPRe

Molecular
Electrochemistry and
Redox Photochemistry

Cyrille COSTENTIN, PR1

BLUTEAU Caroline, ADJENES
P2
CAMERINO Nathalie, Tech CE
CHARDON Sylvie, DR2
COLLOMB Marie-Noëlle, DR1
FORTAGE Jérôme, CR CN
MOLTON Florian, IE HC
SAINT-AMAN Éric, PR CE
SIRACH Sélim, ASI

Team I2BM

Engineering and
Interactions of
Biomolecules

Nicolas SPINELLI, PR2

BERTHET Nathalie, PR2
BONNET Hugues, IE CN
BOTURYN Didier, DR1
CALIN Miguel, *Tech CE*
décharge 100%
CHIERICI Sabine, MCF HC
DEFRANCQ Éric, PR CE
DEGARDIN Mélissa, MCF
DUBATCHEVA Galina, CR CN
GOYARD David, CR CN
GUÉRENTE Liliane, MCF HC
JOURDAN Muriel, MCF HC
LARTIA Rémy, IGR
LAVERGNE Thomas, CR CN
RENAUDET Olivier, PR CE
ROZAND Régine, Tech CN
VAN DER HEYDEN Angéline,
MCF HC

Team SeRCO

Synthesis and Reactivity
in Organic Chemistry

Jean-François POISSON, PR1

BERTHIOL Florian, CR CN
BLANDIN Véronique, MCF HC
CAMERINO Nathalie, Tech CE
CARRET Sébastien, MCF
CHAVANT Pierre-Yves, IR
CIVIDINO Pascale, IGE CN
CURTIL Mathieu, IGE CN, CDI
DARSES Benjamin, CR CN
FAYOLLE Martine, Tech CE
GREENE Andrew, DR CE,
Emeritus
KANAZAWA Alice, MCF HC
MINASSIAN Frédéric, MCF HC
PY Sandrine, DR2
QUINTARD Adrien, CR CN
VALLÉE Yannick, PR CE

Team SITH

Spectrometry,
Interactions,
Theoretical Chemistry

Anne MILET, PR CE

CAMERINO Nathalie, Tech CE
CASIDA Mark, PR1
GATINEAU David, CR CN
GIMBERT Yves, DR1
GIRARD Pierre, IR
JAMET Hélène, PR2

Independent Researchers

PÉREZ DEL VALLE Carlos,
MCF
Modélisation, Dynamique, et
Phases Condensées
SIEFFERT Nicolas, MCF
Réactivité chimique en
solution: influence de la
dynamique et de
l'environnement du solvant

Département de Chimie Moléculaire UMR 5250

SERVICES

ADMINISTRATION and FINANCE

Véronique GINESTE, ASI

BLUTEAU Caroline, ADJENES P2
CAMERINO Nathalie, Tech CE
ROZAND Régine, Tech CN

NETWORK and INFORMATION SYSTEMS

Sébastien MORIN, IE CN

* THOMAS Fabrice, PR1

CSSI

MORIN Sébastien, IE CN

**Park management,
administration. Network and
server administration**

BOUCHAFA Hafid, AI

MORIN Sébastien, IE CN

Design and Development
FORESTIER Quentin, IE (CDD)

COMMUNICATION

** *Damien JOUVENOT, MCF*

** CAMERINO Nathalie Tech CE
BOTURYN Didier, DR1
BERTHET Nathalie, MCF HC
HOLZINGER Michael, DR2
JAMET Hélène, PR2
LECONTE Nicolas, MCF HC
MINASSIAN Frédéric, MCF HC
PY Sandrine, DR2

COMMITTEES

HYGIENE & SAFETY

Pascale CIVIDINO, IGE CN

AP

CIVIDINO Pascale, IGE CN
CURTIL Mathieu, IGE CN CDI
GOYARD David, CR CN
HOLZINGER Michael, DR2
LECONTE Nicolas, MCF HC
SIRACH Sélim, ASI

SSIAP

BONNET Hugues, IE CN

PCR

BONNET Hugues, IE CN
PHILOUZE Christian, IR

SEMINAR

Sandrine PY, DR2

CAMERINO Nathalie, Tech CE
CHARDON Sylvie, DR2
CHIERICI Sabine, MCF HC
GATINEAU David, CR CN
GORGY Karine, MCF
MARTIN David, DR2

REFERENTS

CNRS European Unit

GENNARI Marcello, CR CN

Sustainable Development

QUINTARD Adrien, CR CN

DATA Management

PY Sandrine, CR CN

HAL, Open Science

DUBACHEVA Galina, CR CN

Valorisation / Maturation

GROSS Andrew

* *Management Representative*

** *Correspondents for the UGA*

QUALITY of LIFE and WORKING CONDITIONS

Chantal GONDRAN, PR2

BERTHET Nathalie, PR2
BOUCHAFA Hafid, AI
LANOE Pierre-Henri, CR CN
MOLTON Florian, IE HC
ROZAND Régine, Tech CN

CONTINUING EDUCATION

CAMERINO Nathalie, Tech CE

INFORMATION SECURITY

Pierre GIRARD, IR

MORIN Sébastien, IE CN, **PSSI**
GINESTE Véronique, ASI

Département de Chimie Moléculaire UMR 5250

Scientific Platforms

Photochemistry and Photophysics

* LOISEAU Frédérique, PR1

Functionalization and Transduction

Yannig NEDELLEC, IR

* HOLZINGER Michael, DR2
LE PELLEC Arielle, IGE CN

Characterization of Interactions

Hugues BONNET, IE CN

* VAN DER HEYDEN Angeline,
MCF HC

Nuclear Magnetic Resonance

* MOLLOY Jennifer, CR CN
ALTOUNIAN Nicolas, Tech CN
SANAHUGES Romain, ASI, CDD

Mass Spectroscopy

Laure FORT, IGE HC

* GIMBERT Yves, DR1
GUÉRET Rodolphe, ASI

Organic Synthesis

Mathieu CURTIL, IGE CN, CDI

* CHAVANT Pierre-Yves, IR
CIVIDINO Pascale, IGE CN
FAYOLLE Martine, Tech CE

Biomolecular Synthesis

* LARTIA Rémy, IGR

Electron Paramagnetic Resonance

Florian MOLTON, IE HC

* DUBOC Carole, DR CE

Crystallography

Christian PHILOUZE, IR

* LANOE Pierre-Henri, CR CN
ALTOUNIAN Nicolas, Tech CN

Supercomputing

Pierre GIRARD, IR

* MILET Anne, PR CE

Chemical Library

* Non-Staff DCM

**Scientific Platforms from
ICMG UAR CNRS 2607**

* **Scientific Coordinators**