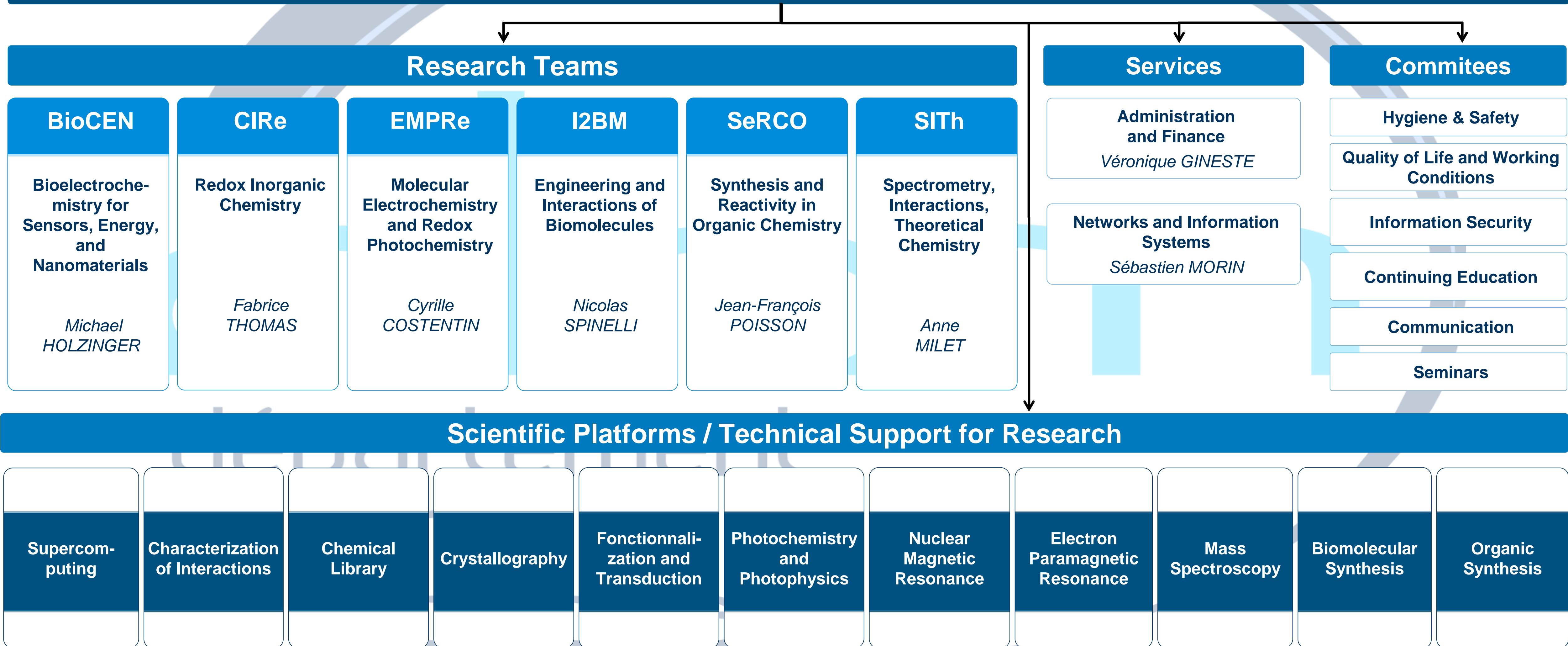


# Département de Chimie Moléculaire UMR 5250

*Director : Didier BOTURYN*

*Deputy Director: Fabrice THOMAS*

*Administrative and Financial Officer : Véronique GINESTE*



# Research Teams and Independent Researchers

## Team BioCEN

Bioelectrochemistry  
for Sensors, Energy,  
and Nanomaterials

*Michael HOLZINGER, DR2*

COSNIER Serge, DR CE,  
*Emeritus*  
GIROUD Fabien, MCF  
GONDRAN Chantal, PR2  
GORGY Karine, MCF  
GROSS Andrew, CR CN  
LE GOFF Alan, DR2  
LE PELLEC Arielle, IGE CN  
NEDELLEC Yannig, IR  
ROZAND Régine, Tech CN

## Team CIRe

Redox Inorganic  
Chemistry

*Fabrice THOMAS, PR1*

BELLE Catherine, DR2  
BLUTEAU Caroline, ADJENES  
C1  
CAMERINO Nathalie, Tech CE  
CHAUVIN Jérôme, PR2  
DUBOC Carole, DR CE  
D'HARDEMARE Amaury, MCF  
HC  
GENNARI Marcello, CR CN  
JARJAYES Olivier, MCF HC  
JOUVENOT Damien, MCF  
LALAOUI Noémie, CR CN  
LANOË Pierre-Henri, CR CN  
LECONTE Nicolas, MCF HC  
LOISEAU Frédérique, PR1  
MARTIN David, DR2  
MOLLOY Jennifer, CR CN  
MOLTON Florian, IE HC  
ROYAL Guy, PR CE  
SIRACH Sélim, ASI  
THIBON-POURRET Aurore,  
MCF  
TOMAS GONZALEZ DE  
MENDIVIL Eder, CR CN

## Team EMPRe

Molecular  
Electrochemistry and  
Redox Photochemistry

*Cyrille COSTENTIN, PR1*

BLUTEAU Caroline, ADJENES  
C1  
CAMERINO Nathalie, Tech CE  
CHARDON Sylvie, DR2  
COLLOMB Marie-Noëlle, DR1  
FORTAGE Jérôme, CR CN  
MOLTON Florian, IE HC  
SAINT-AMAN Éric, PR CE  
SIRACH Sélim, ASI

## Team I2BM

Engineering and  
Interactions of  
Biomolecules

*Nicolas SPINELLI, PR2*

BERTHET Nathalie, MCF HC  
BONNET Hugues, IE CN  
BOTURYN Didier, DR1  
CALIN Miguel, *Tech CE*  
*décharge 100%*  
CHIERICI Sabine, MCF HC  
CONSTANT Jean-François,  
Volunteer researcher UGA  
DEFRANCQ Éric, PR CE  
DEGARDIN Mélissa, MCF  
DUBATCHEVA Galina, CR CN  
GOYARD David, CR CN  
GUÉRENTE Liliane, MCF HC  
JOURDAN Muriel, MCF HC  
LARTIA Rémy, IGR  
LAVERGNE Thomas, CR CN  
RENAUDET Olivier, PR CE  
ROZAND Régine, Tech CN  
VAN DER HEYDEN Angéline,  
MCF HC

## Team SeRCO

Synthesis and Reactivity  
in Organic Chemistry

*Jean-François POISSON, PR1*

BERTHIOL Florian, CR CN  
BLANDIN Véronique, MCF HC  
CAMERINO Nathalie, Tech CE  
CARRET Sébastien, MCF  
CHAVANT Pierre-Yves, IR  
CIVIDINO Pascale, IGE CN  
CURTIL Mathieu, IGE CN, CDI  
DARSES Benjamin, CR CN  
FAYOLLE Martine, Tech CE  
GREENE Andrew, DR CE,  
*Emeritus*  
KANAZAWA Alice, MCF HC  
MINASSIAN Frédéric, MCF HC  
PY Sandrine, DR2  
QUINTARD Adrien, CR CN  
VALLÉE Yannick, PR CE

## Team SITH

Spectrometry,  
Interactions,  
Theoretical Chemistry

*Anne MILET, PR CE*

CAMERINO Nathalie, Tech CE  
CASIDA Mark, PR1  
GATINEAU David, CR CN  
GIMBERT Yves, DR1  
GIRARD Pierre, IR  
JAMET Hélène, PR2

## Independent Researchers

PÉREZ DEL VALLE Carlos,  
MCF  
*Modélisation, Dynamique, et*  
*Phases Condensées*  
  
SIEFFERT Nicolas, MCF  
*Réactivité chimique en*  
*solution: influence de la*  
*dynamique et de*  
*l'environnement du solvant*

# Département de Chimie Moléculaire UMR 5250

## SERVICES

### NETWORK and INFORMATION SYSTEMS

*Sébastien MORIN, AI*

\* THOMAS Fabrice, PR1

#### CSSI

MORIN Sébastien, AI

**Park management,  
administration. Network and  
server administration**

BOUCHAFA Hafid, AI

MORIN Sébastien, AI

**Design and Development**

Recruitment in progress

### ADMINISTRATION and FINANCE

*Véronique GINESTE, ASI*

BLUTEAU Caroline, ADJENES C1

CAMERINO Nathalie, Tech CE

ROZAND Régine, Tech CN

### COMMUNICATION

\*\* *Damien JOUVENOT, MCF*

\*\* CAMERINO Nathalie Tech CE

BOTURYN Didier, DR1

BERTHET Nathalie, MCF HC

HOLZINGER Michael, DR2

JAMET Hélène, PR2

LECONTE Nicolas, MCF HC

MINASSIAN Frédéric, MCF HC

PY Sandrine, DR2

### QUALITY of LIFE and WORKING CONDITIONS

*Chantal GONDRAN, PR2*

BERTHET Nathalie, MCF HC

BOUCHAFA Hafid, AI

LANOE Pierre-Henri, CR CN

MOLTON Florian, IE HC

ROZAND Régine, Tech CN

## COMMITTEES

### HYGIENE & SAFETY

*Pascale CIVIDINO, IGE CN*

#### AP

CIVIDINO Pascale, IGE CN

GOYARD David, CR CN

HOLZINGER Michael, DR2

LECONTE Nicolas, MCF HC

SIRACH Sélim, ASI

#### SSIAP

BONNET Hugues, IE CN

#### PCR

BONNET Hugues, IE CN

PHILOUZE Christian, IR

### SEMINAR

*Sandrine PY, DR2*

CAMERINO Nathalie, Tech CE

CHARDON Sylvie, DR2

CHIERICI Sabine, MCF HC

GATINEAU David, CR CN

GORGY Karine, MCF

MARTIN David, DR2

### INFORMATION SECURITY

*Pierre GIRARD, IR*

MORIN Sébastien, AI, **PSSI**

GINESTE Véronique, ASI

### CONTINUING EDUCATION

CAMERINO Nathalie, Tech CE

\* **Management Representative**

\*\* **Correspondents for the UGA**

# Département de Chimie Moléculaire UMR 5250

## Scientific Platforms

### Photochemistry and Photophysics

\* LOISEAU Frédérique, PR1

### Organic Synthesis

*Mathieu CURTIL, IGE CN, CDI*

\* CHAVANT Pierre-Yves, IR  
CIVIDINO Pascale, IGE CN  
FAYOLLE Martine, Tech CE

\* **Scientific Coordinators**

### Functionalization and Transduction

*Yannig NEDELLEC, IR*

\* HOLZINGER Michael, DR2  
LE PELLEC Arielle, IGE CN

### Biomolecular Synthesis

\* LARTIA Rémy, IGR

### Characterization of Interactions

*Hugues BONNET, IE CN*

\* VAN DER HEYDEN Angeline,  
MCF HC

### Electron Paramagnetic Resonance

*Florian MOLTON, IE HC*

\* DUBOC Carole, DR CE

### Nuclear Magnetic Resonance

\* MOLLOY Jennifer, CR CN  
ALTOUNIAN Nicolas, Tech CN  
SANAHUGES Romain, ASI, CDD

### Crystallography

*Christian PHILOUZE, IR*

\* LANOE Pierre-Henri, CR CN  
ALTOUNIAN Nicolas, Tech CN

### Mass Spectroscopy

*Laure FORT, IGE HC*

\* GIMBERT Yves, DR1  
GUÉRET Rodolphe, ASI

### Supercomputing

*Pierre GIRARD, IR*

\* MILET Anne, PR CE

### Chemical Library

\* Non-Staff DCM

**Scientific Platforms from  
ICMG UAR CNRS 2607**